

Our mission is to learn the way of Jesus together as we invite others to join us at His Table.

Our Common Practices

We Gather

We gather for worship more often than not.
We gather in smaller groups to connect, learn, and grow.

We create hospitable space for one another.

We Grow

We attend the means of grace daily. (i.e. We attend to the presence of God through Scripture reading and meditation, prayer on behalf of others and myself, breath prayer, spiritual reading and study...).

We nurture our faith.

We attend to relationships that promote growth.
We develop and learn as human beings made in the image of God.

We Give

We are a generous people who give our time and resources to the mission of God and the world.

We tithe as the means through which our community enjoys fiscal health so as to minister generously.

We Go

We follow Jesus into the world as His healing presence.

We help the vulnerable among us.

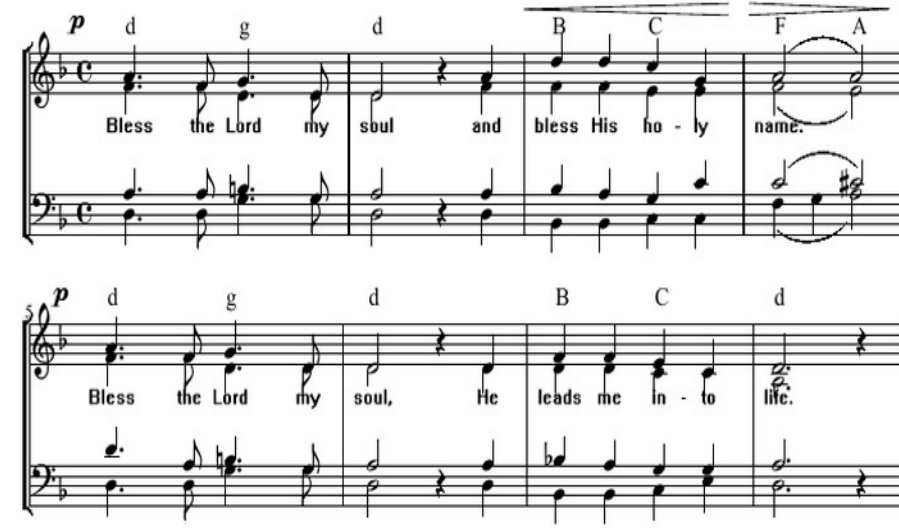
We go into the world offering Jesus' invitation to gather at His Table.

A Breath Prayer for the coming week:

"I put my trust in Your unfailing Love."

Bless the Lord my soul

m.: J. Berthier, Taizé



CHURCH STAFF

Rob Kazee, Pastor

rpkazee@gmail.com ~ 202-997-1222

Jeff Wolfe, Pastor of Christian Formation

jeffwolfe125@gmail.com ~ 717-261-6173

Becky Wolfe, Pastor of Children's Ministry

rwolfenaz@gmail.com ~ 717-514-6275

Barb Long, Director of Care and Community

barbaralong2016@yahoo.com ~ 717-761-6110

Bekah Kratzsch, Office Administrator

office@tablelifechurch.org ~ 717-592-0299

617 16th St. New Cumberland, PA 17070

717-744-6444

web: www.tablelifechurch.org

www.facebook.com/tablelifechurch

CHURCH OF
 THE NAZARENE

TABLELIFE
CHURCH



Order of Worship
23 February 2020
Transfiguration Sunday

We Gather to Worship God

Prelude Music
Welcome
Call to Worship
Worship Reading

We Listen to the Scriptures

Pastoral Prayer
Offering
Sermon Series: Sermons From The Sermon
Sermon: "Narrow Gate"
Scripture Reading: Matthew 7.13-29

We Come to the Table

Passing the Peace of Christ
Song of preparation
Prayer of Consecration
The Lord's Prayer
We Eat and Drink Together
Prayer of Thanksgiving

We Go to Live in the Reign of God

Community Life
Gossiping the Good Stuff
Doxology
Blessing and Sending

Sermon Reflection Guide

Matthew 7.13-29

"Enter through the narrow gate; for the gate is wide and the road is easy that leads to destruction, and there are many who take it. For the gate is narrow and the road is hard that leads to life, and there are few who find it. "Beware of false prophets, who come to you in sheep's clothing but inwardly are ravenous wolves. You will know them by their fruits. Are grapes gathered from thorns, or figs from thistles? In the same way, every good tree bears good fruit, but the bad tree bears bad fruit. A good tree cannot bear bad fruit, nor can a bad tree bear good fruit. Every tree that does not bear good fruit is cut down and thrown into the fire. Thus you will know them by their fruits. "Not everyone who says to me, 'Lord, Lord,' will enter the kingdom of heaven, but only the one who does the will of my Father in heaven. On that day many will say to me, 'Lord, Lord, did we not prophesy in your name, and cast out demons in your name, and do many deeds of power in your name?' Then I will declare to them, 'I never knew you; go away from me, you evildoers.'"

"Everyone then who hears these words of mine and acts on them will be like a wise man who built his house on rock. The rain fell, the floods came, and the winds blew and beat on that house, but it did not fall, because it had been founded on rock. And everyone who hears these words of mine and does not act on them will be like a foolish man who built his house on sand. The rain fell, and the floods came, and the winds blew and beat against that house, and it fell—and great was its fall!"

Now when Jesus had finished saying these things, the crowds were astounded at his teaching, for he taught them as one having authority, and not as their scribes.

Question for Everyone

(1) Christianity is a happy life of eternal hope.
(10) Christianity is a meaningful life of rigorous demands.
Where are you on this range?

Jesus is Demanding

Jesus is not as seeker sensitive as modern day practitioners of Christianity might want him to be. If seeker sensitive means providing plenty of space and time for folk to consider whether or not they want to follow Jesus, then that's a good thing. But we must be clear that it is Jesus that we are called to follow and that following Jesus is demanding. Talk about the ways you find Jesus demanding.

The Narrow Way

Stanley Hauerwas offers, "Jesus does not try to entice us to understate that journey by telling us that it will be the easy way or that many will join us along the way. The gate is narrow and the road is hard." You know, if you hang out in some churches, it seems as though folk have gotten into that church without going through Jesus. How is this possible? What does this look like?

We Need Help

You can be a moral person without the Spirit of Jesus. You can be a conscientious and kind person without the Spirit of Jesus. You can be a law-abiding American citizen without the Spirit of Jesus. But to follow the Jesus way as revealed in the life, death, and resurrection of Jesus is going to require help: the Spirit within you the community of Christ around you because the Jesus way is a narrow way, few will take it. Talk about the kind of help you need to follow Jesus.

Any Old Road Will Get You There

When you become a Christian, you essentially place your future destination in the hands of Jesus and I'm not just talking about after you die. I'm talking about decisions about your future here and now. To follow Christ is to ask the Spirit of Christ to lead you in your decisions so that He can place you strategically in your sweet spot of service in the reign of God. Are you in your sweet spot of service in the reign of God?

If you are a guest with us today, please take time to fill out a Connection Card located in the sanctuary chairs. After worship, an usher will be waiting to receive your card at the guest table in the lobby. As an expression of our hospitality, you will receive a mug filled with chocolates.